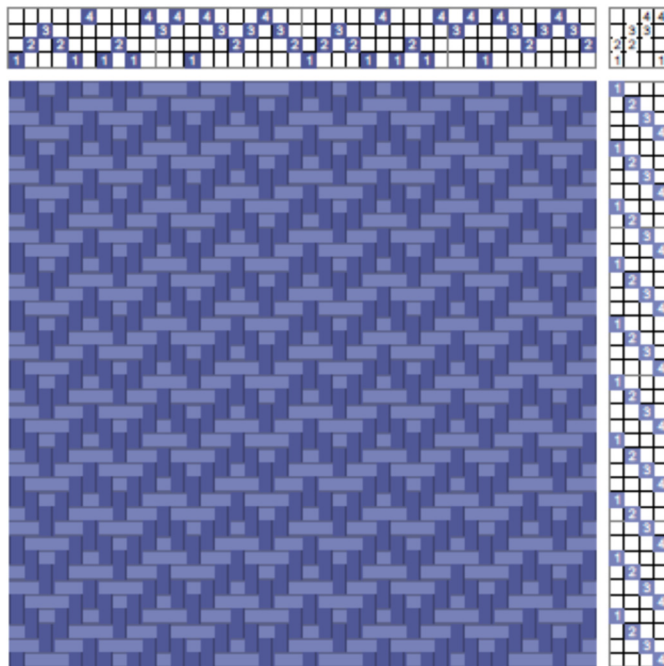
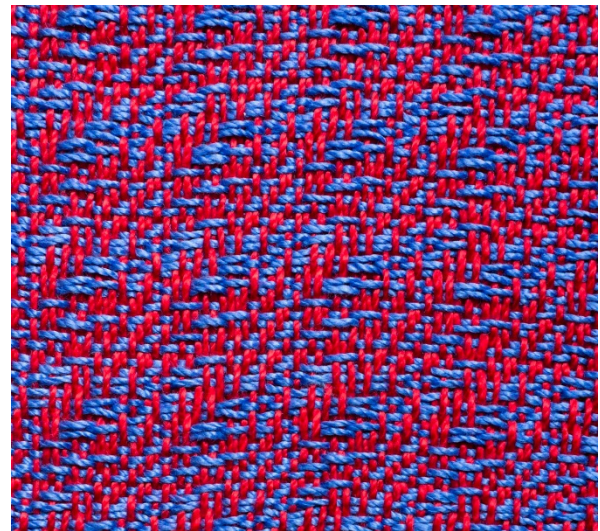
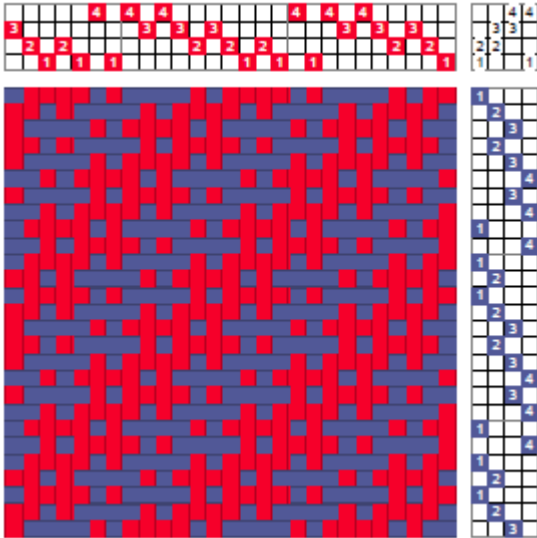


Advancing Twill

The “advance” that gives the twill its name results from starting with a twill, and then dropping the first shaft and adding the next. On four shafts, we can start with 1, 2, 3, then drop 1 and add 4. An example of a straight advancing twill is shown in the drawdown and the fabric below.



The process can be applied to a number of twills. The pointed twill is another possibility; the drawdown on the left and the fabric below use a straight twill



treading on a pointed twill threading, but tromp as writ and other treadlings are possible.